




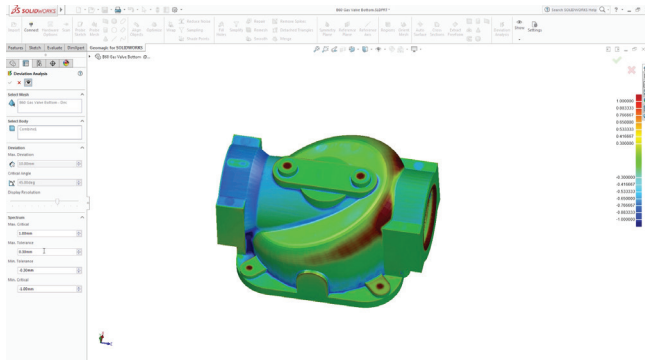


ARTEC 3D PRODUCT INFORMATION



	Artec Micro	Artec Spider	Artec Eva/Eva Lite	Artec Leo	Artec Ray	Artec Studio Software
Scanning Range	 Small Screw to Fist Size Object	 Coin to Basketball Size Object	 Basketball to Small Car Size Object	 Basketball to Small Car Size Object	 Motorcycle to House Size Object	<p>Artec Studio features the most advanced 3D data algorithms which give you high precision in your results, while at the same time making 3D scanning intuitive and user-friendly.</p> <p>Autopilot mode ensures a smooth workflow, taking you through all the post-processing steps completely automatically.</p> <p>No need to prepare your object in advance, just point the 3D scanner and shoot.</p> <p>The interface of Artec's smart 3D scanning software is optimized for tablet use. You can easily manipulate all the tools of Artec Studio to produce perfect results on a tablet and have greater freedom of movement at the same time.</p> <p>MINIMUM RECOMMENDED COMPUTER SPECIFICATIONS: OS: Windows 7 or newer USB: 2.0/3.0 CPU: Intel Core i7 or better RAM: 18GB or more GRAPHICS: NVIDIA GeForce 400 or better, 1GB+</p>
3D Point Accuracy (down to)	0.01 mm	0.05mm	0.1mm	0.1mm	0.7mm	
3D Resolution (down to)	0.029mm	0.1mm	0.5mm	0.5mm	25 arcsecs	
Scanner Type	Desktop	Handheld	Handheld	Handheld	Tripod	
Data Acquisition Speed (down to)	1 mln points/sec	1 mln points/ sec	2mln points/sec	3 mln points/sec	280 000 points/sec	
Dimensions (HxDxW)	290 x 290 x 340mm	190x 140 x 130mm	262 x 158 x 63mm	231 x 162 x 230mm	287 x 200 x 118mm	
Weight	12kg/ 26.7lb	0.8kg/ 1.8lb	0.9kg/ 2lb	2.6kg/ 5.7lb	5.74 kg/ 12.6lb	
Power Source	AC power	AC power or external battery pack	AC power or external battery pack	Built-in exchangeable battery, optional AC power	Two Li-Ion 14V, 49Wh batteries, powers the scanner for up to 4 hours.	
Product Features	<ul style="list-style-type: none"> Ideal for Reverse Engineering and Quality Inspection Makes highly-detailed 3D models of small objects 	<ul style="list-style-type: none"> Processes and produces images of extremely high resolution and superior accuracy Scans small objects or intricate details of large industrial objects Renders complex geometry, sharp edges and thin ribs 	<ul style="list-style-type: none"> Fast scan capturing and simultaneously processing up to two million points per second up to 0.1mm accuracy Ideal for medium sized objects No object preparation needed 	<ul style="list-style-type: none"> Fastest professional handheld 3D Scanner Head can be mounted on a robotic arm or conveyor system for automated scanning Cordless scanner Includes touch panel screen 	<ul style="list-style-type: none"> Ultra-high precision, fast laser scanner Cleanest 3D data capture for minimum post-processing time Ideal for construction, inspection and product design 	

GEOMAGIC SCAN DATA SOFTWARE

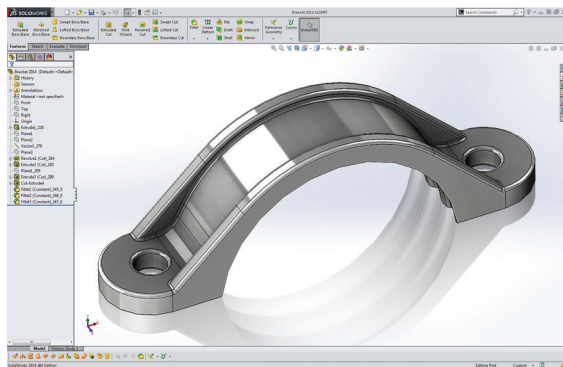


Gs Geomagic® for SOLIDWORKS®

Geomagic for SOLIDWORKS

Geomagic for SOLIDWORKS is the Industry's most complete Scan-To-SOLIDWORKS model solution. It allows for direct scanning integration with Artec Handheld Scanners, via Artec Studio.

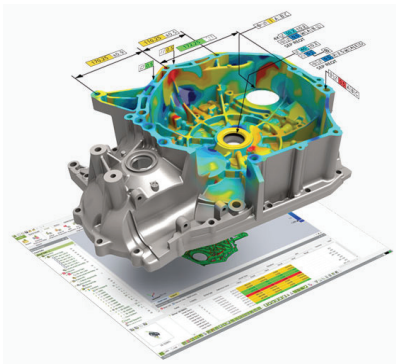
Easily create solid, feature-based parts using the precise scan registration, automated smoothing, mesh editing, auto sketch creation and intelligent extraction of feature tools implemented inside SOLIDWORKS.



Dx Geomagic® Design X™

Geomagic Design X - Reverse Engineering

Geomagic Design X, the industry's most comprehensive reverse engineering software, combines history-based CAD with 3D scan data processing so you can create feature-based, editable solid models compatible with your existing CAD software. Shave days or weeks from product idea to finished design. Connects with most all CAD programs using unique LiveTransfer™ technology. The software allows you to create products that would be difficult to design without reversed engineering.



Cx Geomagic® Control X™

Geomagic Control X Quality/Inspection

Geomagic® Control X™ is a comprehensive metrology software platform. The simple user interface, innovative new metrology, inspection tools and other features of Geomagic Control X allow it to deliver a user-friendly, comprehensive 3D inspection in any manufacturing workflow. Accurate measurement and fast analysis are accessible to anyone aspiring to build quality in manufactured parts and assemblies.